

# DEVELOPING SUSTAINABLY

Mainfreight Supersite  
Favona Estate  
Māngere

2024



COMMITTED TO  
**CARBON NEUTRAL**  
—+—  
**GREEN STAR**  
CERTIFIED RATING



Goodman's commitment to sustainable development includes the recycling and repurposing of demolition materials across all its brownfield redevelopment projects.

The completed facility is 5 Green Star Built rated 35,860 sqm multi-warehouse facility and was awarded the Property Council of NZ Excellence in the Industrial category.

GOODMAN'S  
COMMITMENT

# OVERVIEW

Throughout the demolition stage, Goodman's Favona Estate in Māngere has seen an impressive 80% of demolition material, over 2,500 tonnes, recycled.



# CHALLENGE



The demolition of the former T&G tomato growing glasshouse and packing facility provided some unique challenges for Goodman and its specialist contractor, Phoenix Metal Recyclers.

Encompassing over 40,000 sqm of commercial glasshouses the four-month project included the deconstruction, sorting and transport of all aluminium and steel framing, glass panels, concrete and other building materials to appropriate resource recovery operators.



# SOLUTION

The 6-metre-high glass houses required scissor lifts to facilitate manual disassembly of the structure, with over 750 tonnes of metal and 400 tonnes of glass being recycled. The concrete slab foundations were also broken up into aggregate for use as basecourse in other building and construction projects.

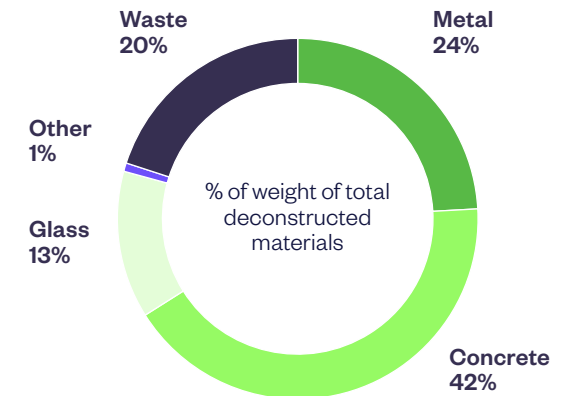
In total there were over 350 truckloads of material recovered from the site.



Carefully managed and closely monitored, the demolition and site preparation has demonstrated what is possible in resource-recovery. The project has dramatically reduced waste and minimised the environmental impact of landfill.

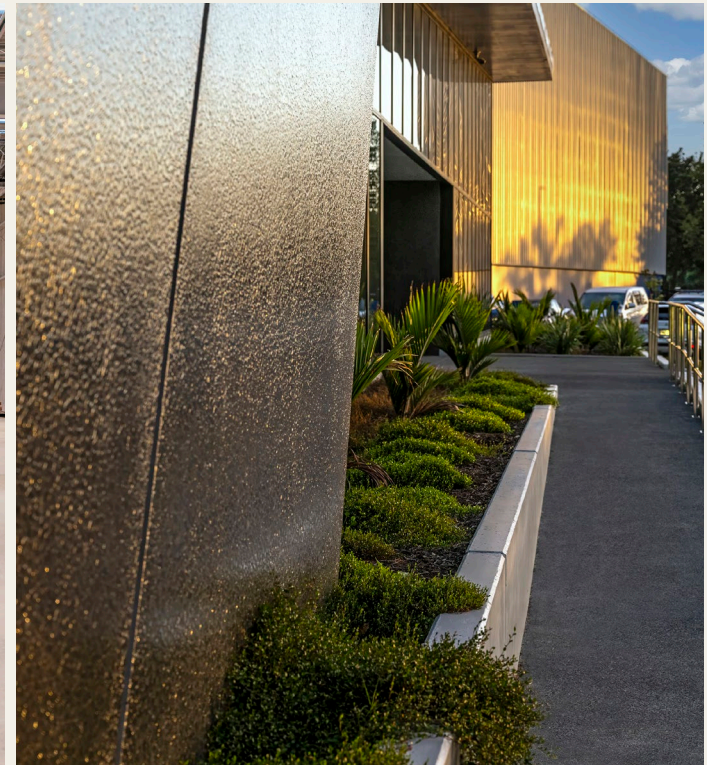
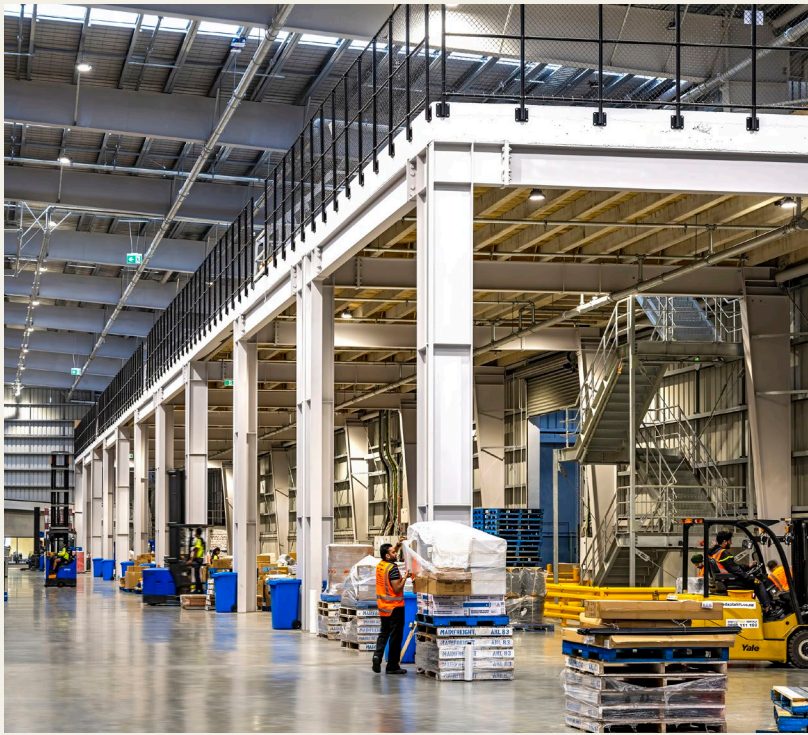


**350** truckloads of material removed from site



As a Toitū carbonzero certified business Phoenix Metal Recyclers is also offsetting the Scope 1 and Scope 3 emissions associated with the project. Around 56 tCO<sub>2</sub>e of carbon credits will be acquired to offset the emissions from equipment and transport.

# MAINFREIGHT SUPERSITE FEATURES GALLERY



**Clockwise from top left:**  
Mezzanine floor for staging below and storage above.  
Rainwater harvesting collection tanks providing 150,000L of storage capacity, reducing potable water consumption.  
Central breezeway joining two warehouses.  
Specialist precast concrete finish.

Ngā mihi

This document has been prepared by Goodman Property Services (NZ) Limited for general information purposes only. Whilst every care has been taken in relation to its accuracy, no warranty of accuracy is given or implied. You should obtain your own independent advice before making any decisions about the information referred to in this document. Images contained in this document have been used to enable the customer to visualise the property and surrounding amenities only, and are not intended to definitively represent the final product. All values are expressed in New Zealand currency unless otherwise stated. 2024.